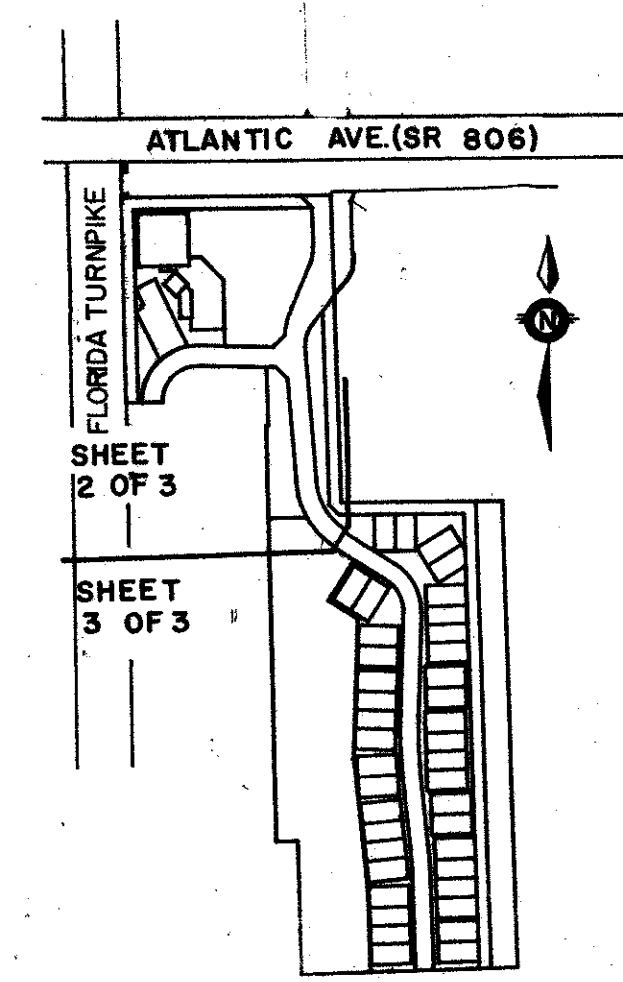


# THE BABCOCK P.U.D. - PARCEL C

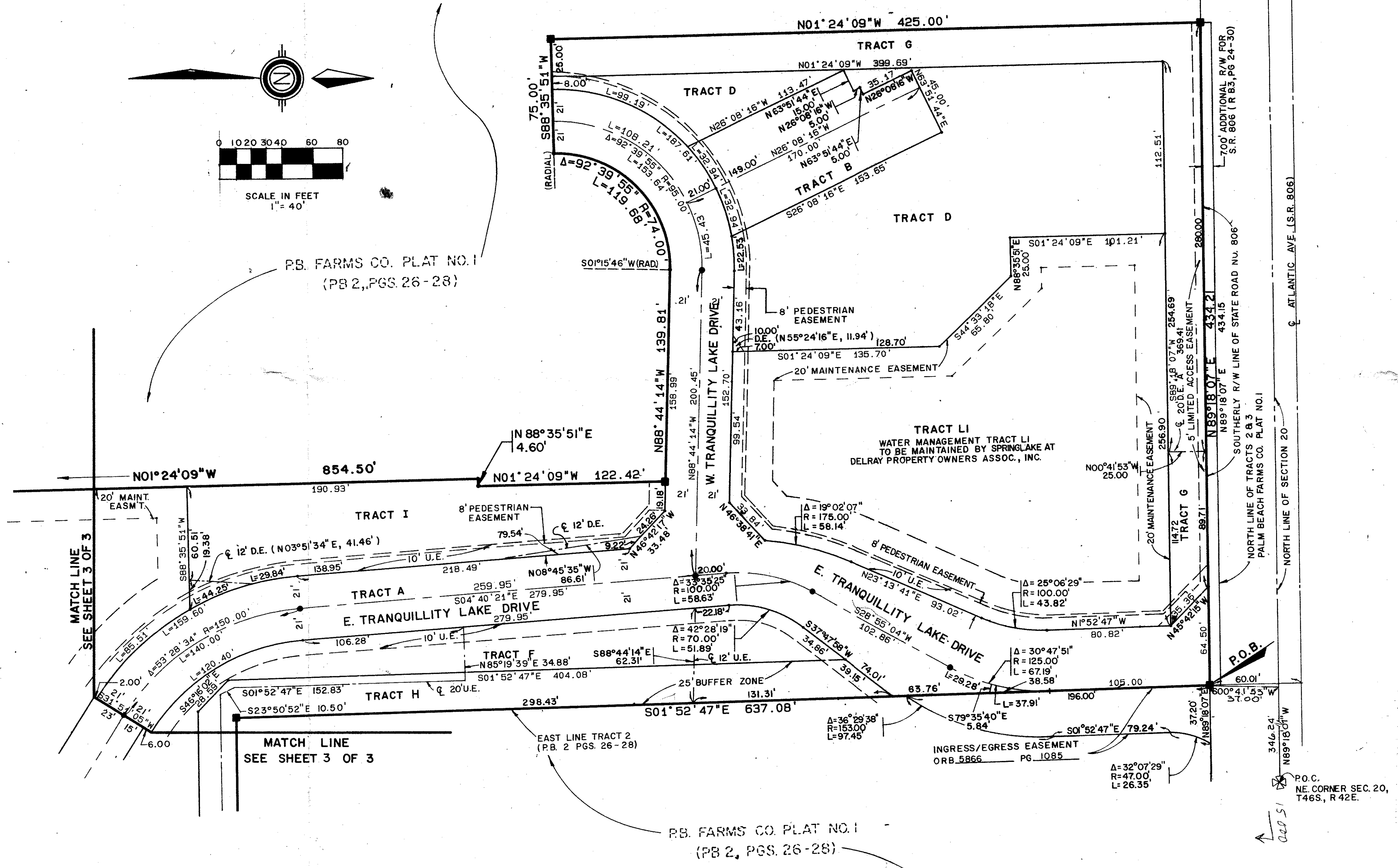
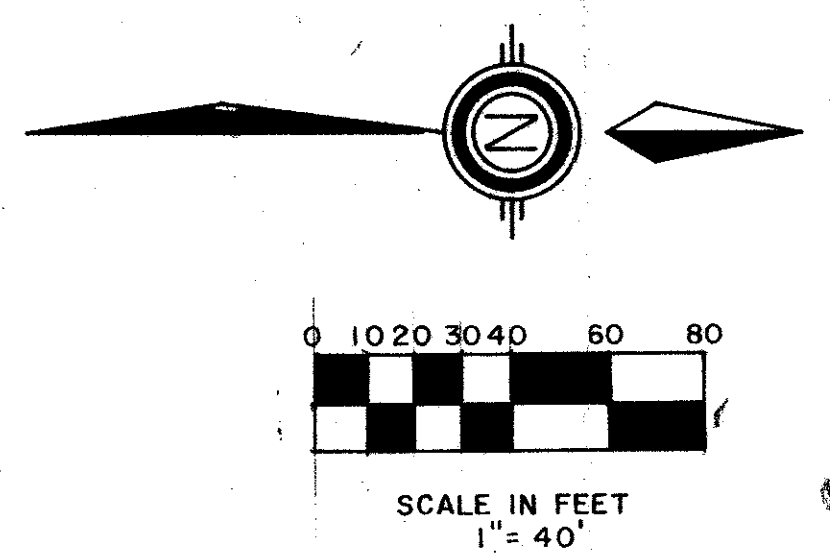
BEING A REPLAT OF A PORTION OF TRACTS 2, 3, AND 31 - 34,  
OF PALM BEACH FARMS COMPANY PLAT NO. 1 (P.B. 2 PGS. 26-28)  
SITUATE IN SECTION 20, TOWNSHIP 46 SOUTH, RANGE 42 EAST  
PALM BEACH COUNTY, FLORIDA

1989

SHEET 2 OF 3



STATE OF FLORIDA  
COUNTY OF PALM BEACH  
THIS PLAT WAS FILED FOR  
RECORD \_\_\_\_\_ DAY OF \_\_\_\_\_  
AD, 1989 AND DULY RECORDED  
IN PLAT BOOK \_\_\_\_\_ ON PAGES  
AND \_\_\_\_\_  
JOHN B. DUNKLE, CLERK  
BY: \_\_\_\_\_, D.C.  
CIRCUIT COURT SEAL



SUBJECT: THE BABCOCK - C  
BOOK 61  
PAGE 199  
QUAD 52  
SS  
PUB NAME  
RS 85-54  
TAZ 468  
3/15/87  
3/30/87  
20/16/12

Pet. 85-54  
0488-001

STANLEY/WANTMAN, INC.  
2000 LOMBARD STREET, WEST PALM BEACH, FL 33407 (305) 842-7444  
DRAWN M.H.C. DATE SEPT. 1987  
CHECKED W.B.H. SCALE 1"=40'  
DRAWING NO. 09269PL  
THE BABCOCK - P.U.D.  
PARCEL C

6/1/199